

Silvia mini | *Create*

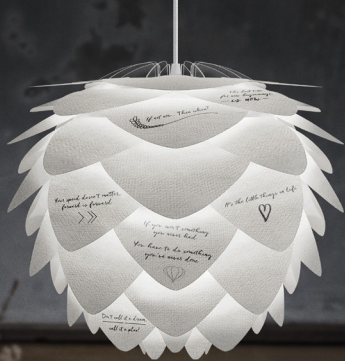


UMAGE - Kongens Nytorv 15 - DK-1050 Copenhagen - Denmark
Phone: +45 31 39 31 31 - info@umage.com - umage.com

A LAMP THAT TELLS A STORY. YOUR STORY

The Silvia Create is not just a lamp - it's a creative canvas where you can express your artistic side and create your own Silvia lampshade. Draw, paint or print your favorite pattern on it. Use your creativity and you will have a lampshade with a one-of-a-kind story and a distinctive identity.

It's time to be creative and have fun!



If not now, then when?

The best time
for any beginning
is now.

But speed doesn't matter.
Forward is forward.
>>

It's the little things in life.
♥

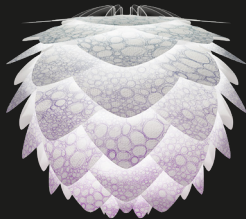
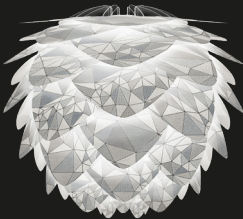
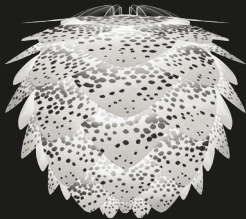
If you want something
you never had.

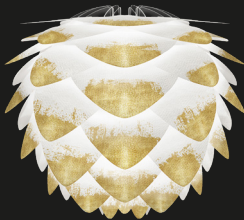
You have to do something
you've never done.
♥

Don't tell it a lie.
tell it a plea!

8	WHAT DOES THIS PACKAGE CONTAIN?
9	BEFORE YOU START
10	GET INSPIRED
11	PRINT YOUR LAMPSHADE
12	ASSEMBLY GUIDE
14	ACCESSORIES
16	EXTRA PACKAGE
19	ABOUT UIMAGE
21	SOCIAL FOLLOW

No limits – use your imagination







BEFORE YOU START

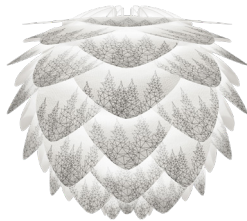
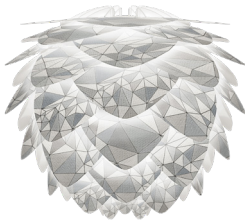
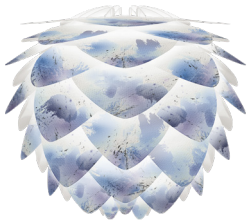
While you can use a vast array of painting materials, like, for example, acrylic paint, water-based markers, spray paint, etc. to draw on your lamp, we advise you to always keep in mind the following tips:

- Use any side of the paper, but note that one side has more texture.
- Painting on the inside of the paper leaves can interfere with light.
- The darker the paint you use, the less light your lampshade will offer.
- The thicker the layer of paint on the leaves, the harder it will be to put them into their designated slots afterwards.

Would you rather print a pattern instead of drawing one?
Just follow our tips on page 10–11.

GET INSPIRED

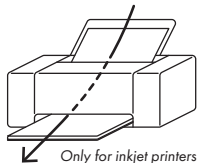
Find inspiration and download ready-made patterns and templates from umage.com.



PRINT YOUR LAMPSHADE

You can always print your favorite templates onto your Silvia Create lampshade. Just make sure that you keep in mind our tips!

- You can print on both sides, but note that the two sides have different textures.
- Each printer has its own limits for paper thickness. Make sure your printer supports printing on 300 g paper.
- Use only a flatbed printer, where the paper goes directly through it on a straight paper path. Do not use a printer where the paper curls around several rollers (curved paths) during the printing process!
- Refer to your printer manual for recommendations on how to print on heavy paper or how to correctly position the paper.
- When printing, make sure to set the custom scale to 100% for a full page cover.
- Make sure your printer has a maximum margin of 10 mm.



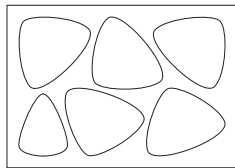
IN THE BOX



x10

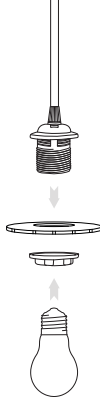


x2



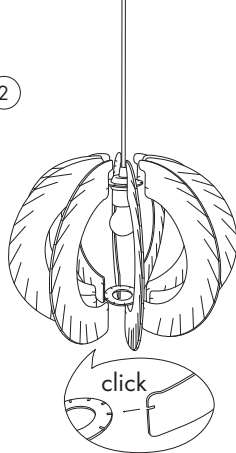
x10 + 2 extra

1



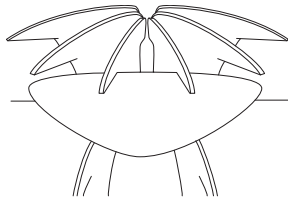
E26 / E27
Max 15W LED

2

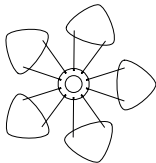


3

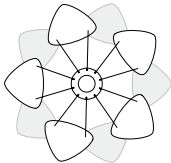
Center



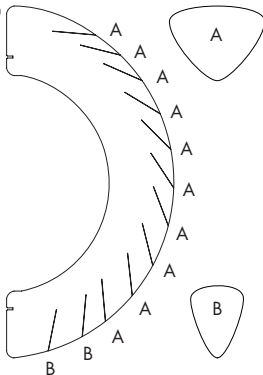
4



Overlap



5

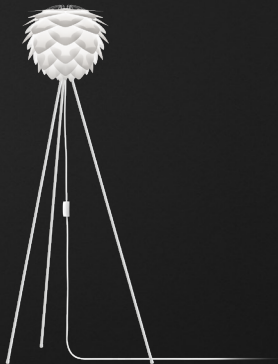


Find assembly videos at our website umage.com/instructions

ONE PRODUCT MANY POSSIBILITIES

Your new Silvia Create can be combined with many accessories, from cord sets to tripods. Adding to its versatility, note that the Silvia Create can be flipped 180°.





YOU CAN ALWAYS
HAVE A NEW
'CANVAS' FOR YOUR
SILVIA CREATE
LAMP SHADE

Buy an extra package of leaves
at umage.com or
in your nearest shop selling
UMAGE designs.







UIMAGE

Discover UIMAGE – a place where beautiful Danish design meets the Scandinavian feel, high-quality materials and a genuine care for the environment.

The company's designer lamps are created with a focus on aesthetics, simplicity and functionality.

All of the lamps are packed in compact gift boxes to optimize worldwide logistics and storage costs, thereby reducing the environmental footprint on our planet.

Simple and sincere – the concept for a brighter future.
That is UIMAGE!







JOIN THE SILVIA CREATE ARTISTS

Share your Silvia Create designs from UIMAGE and find inspiration from other creative minds. Join our community of Silvia Create artists by using *#MySilviaCreate* when you share your creation on Facebook, Instagram or other social media channels.

Don't forget to follow us on Facebook, Instagram, LinkedIn, Pinterest, or Twitter.

@umagedesign #umagedesign #MySilviaCreate



UMAGE UNFOLD AT HOME

GET THE **FREE UIMAGE APP**

Preview our entire collection in
your own home – *before you buy*

Imagine a UIMAGE lamp or furniture piece in your home. Is it the right design, size and colour? We made it easier for you to find the perfect UIMAGE design. Just download our free **UIMAGE Unfold at Home** app from the App Store or Play Store, and see how our designs will look in your home!

